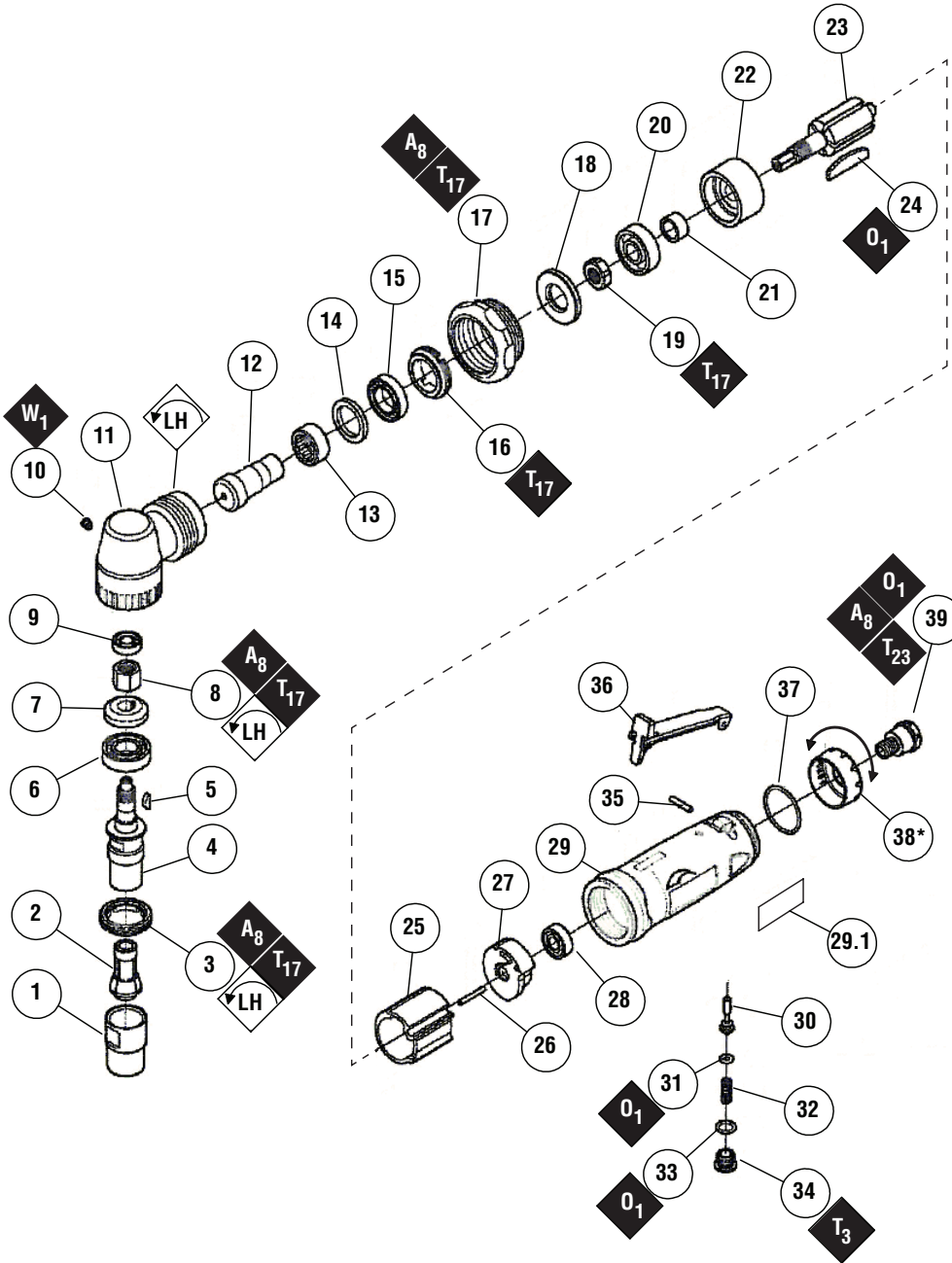


Models
DGR31 - 1/4" Collet
DGR32 - 6 mm Collet

Dynabrade Nitro Series™ Right Angle Die Grinders Complete Assembly



ITEM	P/N	DESCRIPTION	QTY.
1	55911	COLLET CAP	1
2	55912 55938	COLLET INSERT - 1/4" COLLET INSERT - 6 mm	1
3	55940	LOCK NUT	1
4	55941	COLLET SPINDLE	1
5	55942	KEY	1
6	55943	BEARING	1
7	55944	GEAR	1
8	55945	SPINDLE NUT	1
9	55946	BEARING	1
10	55947	GREASE FITTING	1
11	55948	RIGHT ANGLE HOUSING	1
12	55949	PINION	1
13	55950	NEEDLE BEARING	1
14	55951	SPACER	1
15	55952	BEARING	1
16	55953	LOCK NUT	1
17	55954	LOCK RING	1
18	55955	WASHER	1
19	55956	NUT	1
20	55914	BEARING	1
21	55957	ROTOR SPACER	1
22	55958	FRONT END PLATE	1
23	55959	ROTOR	1
24	55918	VANE	5
25	55919	CYLINDER	1
26	55920	PIN	1
27	55921	REAR END PLATE	1
28	55922	BEARING	1
29	55960 55984	HOUSING ASSY. - MDL# DGR31 HOUSING ASSY. - MDL# DGR32	1
29.1	55924	LABEL	1
30	55925	VALVE STEM	1
31	55926	O-RING	1
32	55927	VALVE SPRING	1
33	55928	O-RING	1
34	55929	VALVE CAP	1
35	55930	PIN	1
36	55931	LEVER ASSY.	1
37	55932	O-RING	1
38*	55933	EXHAUST COVER	1
39	55934	INLET BUSHING	1
40	55935	WRENCH	2

KEY

O Oil: O₁ = Air Lube

A Adhesive: A₈ = Loctite #567

W Gear Oil: W₁ = 95848

T_x X = Torque Value (N•m)
(N•m x 8.85 = lb•in.)

Always follow adhesive manufacturers cleaning and priming recommendations.

CAUTION

*Exhaust cover swivels 360°.
Direct exhaust air away from operator, and in a direction that does not cause additional hazards.