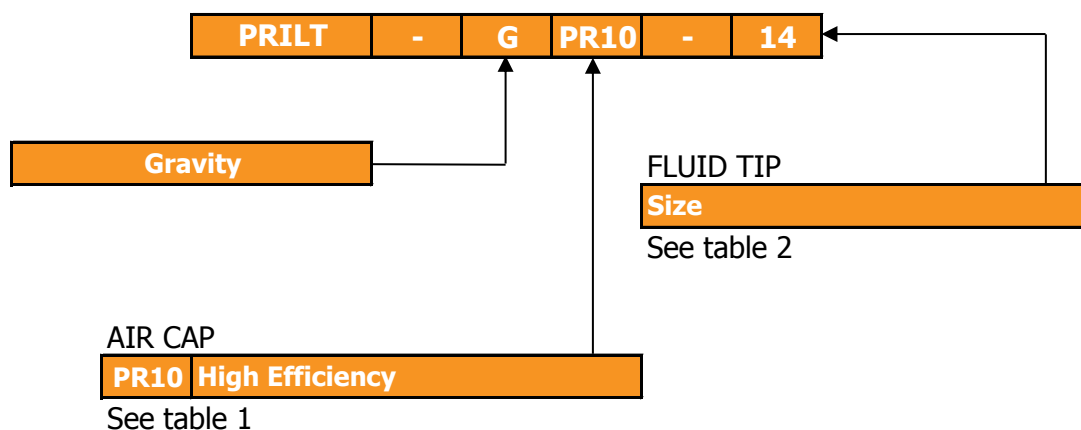


**PRi Pro Lite GUN PART NUMBER FORMAT & PART SELECTION GUIDE**



**TABLE 1**

PRi Pro Lite™ AIR CAP PERFORMANCE GUIDE					
Air Cap & Type		Part Number	Recommended Air Inlet Pressure	Air Consumption	Typical Fan Pattern Size**
PR10	High Efficiency	PRIPRO-102-PR10-K	2.0 Bar [29 psi]	300 L/min	260-300mm

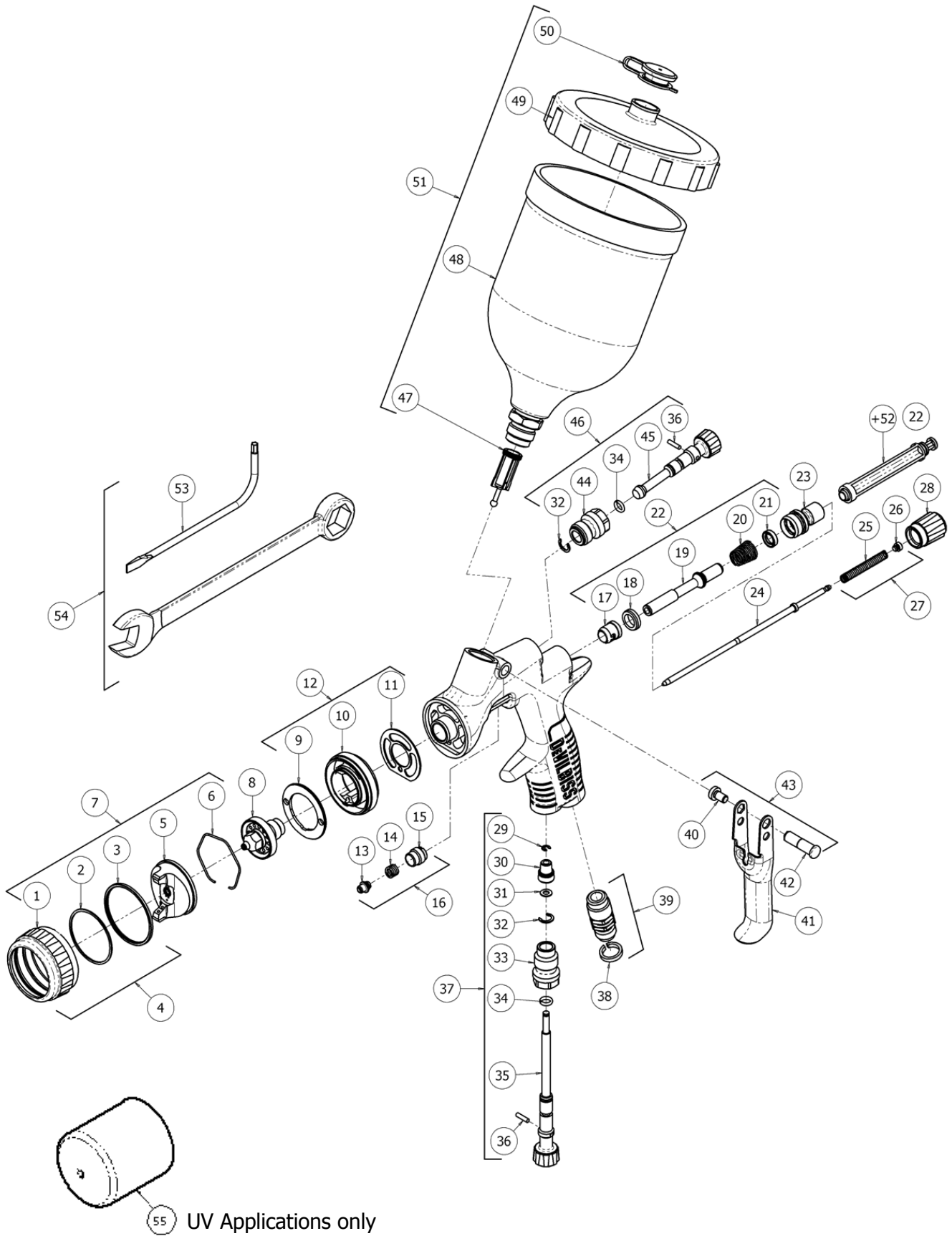
\*\* Fan pattern size @ 200mm distance.

**TABLE 2**

PRi Pro Lite™ FLUID TIPS & NEEDLES		
Fluid Tip Size	Fluid Tip	Needle
* UV1	PRIPRO-219-UV1-K	PRIPRO-319-K
* UV2	PRIPRO-219-UV2-K	
1.4	PRIPRO-220-14-K	PRIPRO-320-K
1.6	PRIPRO-220-16-K	
1.8	PRIPRO-220-18-K	
2.0	PRIPRO-220-20-K	
2.5	PRIPRO-220-25-K	

\* UV Applications only

EXPLODED VIEW



## PARTS LIST

REF.	PART No.	DESCRIPTION	QTY.
1	-	RETAINING RING	1
2	-	SLIP RING	1
3	-	RETAINING RING SEAL	1
4	PRO-420-K	RETAINING RING SUB ASSEMBLY	1
5	-	AIR CAP	1
6	JGA-156-K5	SPRING CLIP (KIT OF 5)	1
7	SEE TABLE	AIR CAP & RETAINING RING	1
8	SEE TABLE	FLUID TIP	1
9	SN-41-K	BAFFLE PLATE	1
10	-	SPRAYHEAD	1
*11	SN-18-1-K2	GASKET (KIT OF 2)	1
12	SN-69-K	SPRAY HEAD KIT	1
13	-	NEEDLE PACKING	1
14	-	PACKING SPRING	1
15	-	PACKING NUT	1
*16	SN-404-K	PACKING, SPRING & PACKING NUT KIT	1
17	-	FRONT VALVE SEAL	1
18	-	VALVE SEAT	1
19	-	AIR VALVE STEM	1
20	-	AIR VALVE SPRING	1
21	-	REAR VALVE SEAL	1
22	PRO-471	AIR VALVE ASSEMBLY	1
23	SN-66-K	AIR VALVE BODY	1
24	SEE TABLE	FLUID NEEDLE	1
25	-	NEEDLE SPRING	1
26	-	SPRING PAD	1
*27	PRO-472-K3	NEEDLE SPRING KIT	1
28	SN-67-C-K	FLUID ADJUSTING KNOB	1
29	25746-007-K5	CIRCLIP (KIT OF 5)	1
30	-	VALVE HEAD	1
31	-	WASHER	1
*32	-	CIRCLIP	1
33	-	VALVE BODY	1
*34	-	O RING	1
35	-	VALVE ADJUSTING KNOB	1
*36	-	SPREADER VALVE PIN	1
37	PRO-407-K	AIRFLOW VALVE	1

**PARTS LIST (Continued)**

REF.	PART No.	DESCRIPTION	QTY.
38	SN-26-K4	COLOUR ID RING KIT (4 COLOURS)	1
39	SN-9-K	AIR INLET	1
*40	-	TRIGGER SCREW	1
41	-	TRIGGER	1
*42	-	TRIGGER STUD	1
43	SP-617-CR-K	TRIGGER STUD & SCREW KIT	1
44	-	VALVE BODY	1
45	-	SPREADER VALVE ADJUSTING KNOB	1
46	PRO-406-K	SPREADER VALVE ASSEMBLY	1
47	KGP-5-K5	FILTER (KIT OF 5)	1
48	-	GRAVITY CUP	1
49	GFC-402	GRAVITY CUP LID	1
	GFC-422	GRAVITY CUP LID BLACK (UV ONLY)	1
50	GFC-2-K5	DRIP CHECK LID (KIT OF 5)	1
51	GFC-501	GRAVITY CUP KIT	1
	GFC-515	GRAVITY CUP KIT BLACK (UV ONLY)	1
+52	-	AIR VALVE SERVICE TOOL	1
53	SPN-8-K2	TORX DRIVER (KIT OF 2)	1
54	SN-406	TOOL KIT	1
55	PRO-46-K3	UV PROTECTION CAP	1

**SERVICE PARTS**

PRO-470	SPRAY GUN REPAIR KIT (INCLUDES ITEMS MARKED *)
GTI-428-K5	SEAL AND PIN KIT, KIT OF 5 (ITEMS 32, 34 & 36)

+ NOT INCLUDED IN THE GUN KIT, ONLY WITH REF 22

**WARNING**

The spray gun must be earthed to dissipate any electrostatic charges which may be created by fluid or air flows. This can be achieved through the spray gun mounting, or conductive air/fluid hoses. Electrical bond from the spray gun to earth should be checked and a resistance of less than 10<sup>6</sup> Ohms is required.