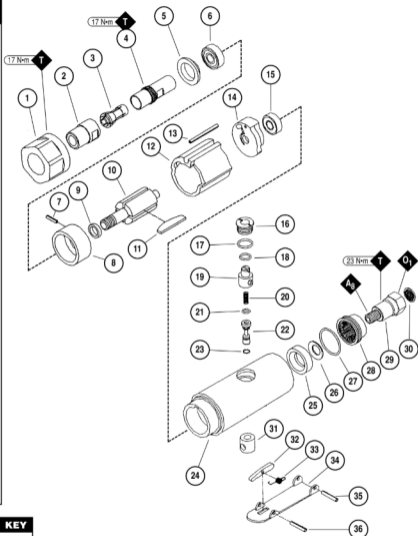




Always operate, inspect and maintain this tool in accordance with the Safety Code for portable air tools (ANSI B186.1) and any other applicable safety codes and regulations. Please refer to Dynabrade's Warning/Safety Operating Instructions for more complete safety information.

## Index Key

No.	Part #	Description
1	18406	Lock Ring
2	18434	Collet Nut
3	18430	Collet Insert – 3 mm
	18431	Collet Insert – 6 mm
	18432	Collet Insert – 1/8"
	18433	Collet Insert – 1/4"
4	18437	Spindle
5	18438	Gasket
6	18428	Ball Bearing
7	18436	Pin
8	18427	Front End Plate
9	18429	Rotor Spacer
10	18425	Rotor
11	18426	Blade (4/pkg.)
12	18424	Cylinder
13	18423	Cylinder Pin
14	18422	Rear End Plate
15	18421	Ball Bearing
16	18420	Valve Screw
17	18419	O-Ring
18	18418	O-Ring
19	18417	Regulator
20	18416	Spring
21	18415	O-Ring
22	18413	Valve Stem
23	18414	O-Ring
24	18400	Housing
25	18401	Silencer
26	18402	Washer
27	18403	O-Ring
28	18404	Deflector
29	18405	Air Inlet
30	18439	Filter
31	18412	Valve Bushing
32	18411	Stop Rod
33	18410	Safety Lever Spring
34	18408	Throttle Lever
35	18407	Lever Pin
36	18409	Spring Pin
37	18435	Spanner Wrench (2)



**O** Oil: O<sub>1</sub> = Air Lube

**A** Adhesive: A<sub>3</sub> = Loctite #567

**T** Torque: N·m x 8.85 = In. - lbs.

## KEY



See reverse side for Important Operating, Maintenance and Safety Instructions.